



Visitor's Guide Sindelfingen

Discover and experience our city

English



Welcome to Sindelfingen



Dear guests and visitors,

Cosmopolitan, diverse and modern, rich in tradition and future-oriented – Sindelfingen is a city of business, sport and culture that has something to offer for every taste.

Part of the German Half-Timbered Houses Road, Sindelfingen not only offers you the chance to discover over 750 years of history in

its picturesque old town, but also caters for your physical well-being with its many restaurants and cafés serving national and international cuisine. With our renowned museums for contemporary art, like the City Gallery and the SCHAUWERK, you can enjoy a varied cultural and event programme.

Technology and car enthusiasts can learn about how the fascinating premium cars are manufactured at the Mercedes-Benz plant. Anyone looking to relax in nature will enjoy our extensive green spaces, like Sommerhofen Park and our city forest, which are perfect for taking a breather.

Our wide range of restaurants and hotels will ensure your stay is enjoyable and comfortable. For leisure or business, for hours or days: Sindelfingen is always worth a visit.

We look forward to seeing you!

Yours,

A handwritten signature in blue ink, which appears to read 'Bernd Vöhringer'.

Dr. Bernd Vöhringer
Mayor

Contents



Historic city centre



Cultural variety



Wide range of leisure activities



Relaxing green spaces



Diverse shopping



Numerous events

1.	Sindelfingen: a traditional city with a future.....	6
2.	History of Sindelfingen.....	8
3.	Best accessibility in the Stuttgart region.....	10
4.	Exploring Sindelfingen.....	12
4.1	Discover places of interest.....	12
4.2	Experience art and culture.....	22
4.3	Take part in exciting guided tours.....	32
4.4	Actively explore Sindelfingen.....	36
4.5	Relax in nature.....	42
5.	Going out, events and entertainment.....	44
6.	Stay and enjoy.....	48
7.	Shopping.....	50
8.	Useful information.....	52
9.	City map.....	54

Sindelfingen, a traditional city with a future

Our city of 64,000 inhabitants is as rich in tradition as it is modern and cosmopolitan. Sindelfingen has an international character and is home to a remarkable cultural diversity. Its lovingly restored buildings and cultural monuments not only put Sindelfingen on the German Half-Timbered Houses Road, but the city is also home to an 11th century treasure in the historic St Martin's Church.

Sindelfingen is not just an important business location for the automotive industry. It is also home to many small and medium-sized enterprises that are pioneers in the high-tech sector and research and development.





Best accessibility in the Stuttgart region

As the fourth-largest city in the Stuttgart region – one of the strongest economic centres of Europe – Sindelfingen offers a good infrastructure and is easily accessible.

Sindelfingen impresses with its modern and efficient infrastructure and offers several connections to the region's growing motorway network and short distances to the airport, trade fairs and Stuttgart city centre. Even without a car you can get around easily – three suburban railway connections guarantee the best connection to the surrounding area.

4

Motorway
accesses

A 81

230*

km

Route map

75*

Buses

22*

Bus lines

330*

Bus stops

3*

Alternative city
train station

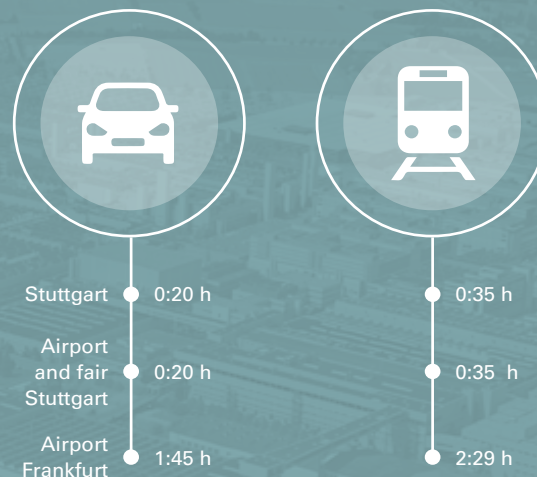
30,000

Passengers
per day

Bus transport

Sindelfingen

Travel Time



*Stadtverkehr Böblingen/Sindelfingen 2020/2021

Discover places of interest

Sindelfingen is well worth a visit: take a tour and discover the charming historic city centre and the church of St Martin, which is steeped in history, or explore the historic sites and lovingly restored monuments.

Art and culture lovers will enjoy the SCHAUWERK museum, the City Gallery and the City Museum. A factory tour at the Mercedes-Benz Customer Centre or a visit to the MOTORWORLD Region Stuttgart will fascinate car lovers. Families can indulge in a day of fun at the Sensapolis indoor adventure park or the largest sports and family pool in the Stuttgart region. Those who are drawn to nature and the outdoors will love the Sindelfingen municipal forest and the many parks and green spaces. You can also enjoy a stroll around the many shops, restaurants and cafés.

Sindelfingen offers something for everyone – come and see for yourself!

We look forward to welcoming you.

■ St Martin's Church

You will see signs for Sindelfingen's landmark as you drive along the A81 motorway: St Martin's Church. Explore one of the most important Romanesque architectural sites in south-west Germany.

There has been a church on this site since the beginning of the eighth century. In the 11th and 12th centuries, this became the current three-nave Romanesque basilica, which was completed in 1133. A thriving Chapter of Canons was established around St Martin's Church for 400 years until Count Eberhard and his mother, Countess Mechthild, moved the institution to Tübingen in 1476/77 to found the university. An Augustinian monastery remained in Sindelfingen.

Stiftstraße, 71063 Sindelfingen
www.martinskirche-sindelfingen.de



"St Martin and the Beggar", group of figures by Fritz Nuß



St Martin's Church



St Martin's Church



Half-timbered house in Sindelfingen's historic city centre

■ Sindelfingen historic city centre

Sindelfingen's well-preserved historic city centre is a real treasure trove:

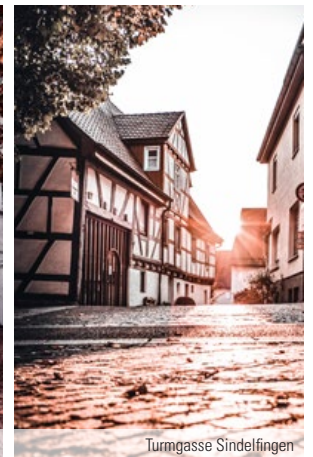
Admire the picturesque half-timbered houses, which – together with the cobblestone streets – give the historic city centre a truly charming character. The city's history can still be experienced first-hand today by citizens and guests alike thanks to its impressive number of half-timbered buildings from the Middle Ages. This is why Sindelfingen is part of the German Half-Timbered House Road, which stretches from the Elbe in the north to Lake Constance in the south.



Restaurant 3 Mohren in Schaffhauser Platz



Ernst-Schäfer-Haus



Turmgasse Sindelfingen

■ Sensapolis

Looking for fun and action? Then visit SENSAPOLIS!

The indoor leisure park has exciting adventures in store for you across an area of more than 12,000 m² that ensure an unforgettable day with your friends and family. Among the most popular attractions are the Sensadrom e-kart track, which offers pure driving pleasure over three levels. The park is open almost all year round, fully air-conditioned and is not weather-dependent.

Melli-Beese-Straße 1, 71063 Sindelfingen

Phone: +49 (0) 7031 2048530

Email: welcome@sensapolis.de

www.sensapolis.de





■ Mercedes-Benz Customer Centre Sindelfingen

Live and up close: witness how the vehicles with the star are created during an exciting factory tour. Visitors have the opportunity to gain an exclusive insight into the centre of excellence for premium and luxury class vehicles.

You can also take part in an experience bus tour. After an audiovisual introduction, you will take a bus tour through the Sindelfingen plant to discover the scale of the factory and learn where the vehicles begin their journey to the customer.

The Mercedes-Benz Shop offers many unique high-quality products. You can find a wide range of original accessories for your Mercedes.

You can also enjoy light and creative regional and international cuisine in the "Daimler" restaurant.

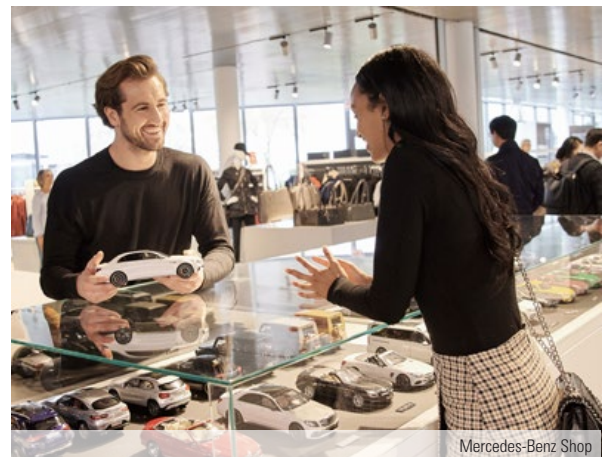
Käsbrünnlerstraße, 71063 Sindelfingen

Email: visit50@daimler.com

www.mbkundencenter.com

Opening times:

Mon-Fri: 08:00–16:00



Mercedes-Benz Shop

■ MOTORWORLD Region Stuttgart

Motorworld Region Stuttgart combines specialists, technology enthusiasts, aesthetes and nostalgists for the rustiest hobby in the world under one roof.

Classic cars and collectors' vehicles can be bought and sold, restored and serviced here by professional traders. Service contractors offer just about anything needed for this mobile passion. The seven restaurants, event areas and meeting rooms provide spaces for "petrol talks" between guests, customers and tenants at all times.

Graf-Zeppelin-Platz 1, 71034 Böblingen
(Flugfeld)
Phone: +49 (0) 7031 306940
www.motorworld.de

Opening times:

Mon-Sat: 08:00–17:30

Sun, Fri: 10:00–17:30

For current opening hours please view
the homepage: www.motorworld.de



Experience art and culture

Art and culture are as much part of Sindelfingen as the Mercedes-Benz plant and the marble zebra crossings.

From contemporary exhibitions to modern art or a journey into the past to the beginnings of craftsmanship in Sindelfingen: Sindelfingen's museums and galleries will delight you with themed openings and historical exhibitions.

■ SCHAUWERK Sindelfingen

Since 2010, the SCHAUWERK Sindelfingen has been showcasing the comprehensive collection of more than 3,500 works by Peter Schaufler († 2015) and Christiane Schaufler-Münch and is now one of the leading venues for contemporary art in southern Germany. Let yourself be fascinated by outstanding German and international art from the 1950s to the present day. The main focus is on works in the abstract, concrete and minimalist tradition of the 20th century. Participate in one of the guided tours or book a special tour at fuehrungen@schauwerk-sindelfingen.de.

Eschenbrünnlestraße 15, 71065 Sindelfingen
Phone: +49 (0) 7031 9324900
Email: contact@schauwerk-sindelfingen.de
www.schauwerk-sindelfingen.de

Opening times:
Sat, Sun: 11:00–17:00

Public guided tours:
Tue, Thu, Sat: 15:00
Sun: 11:00

■ Atelierhaus Studio Sindelfingen

The studio in the city's old monastery, founded by the artists of the Arbeitsgemeinschaft Atelierhaus (studio working group) over 30 years ago, is a real gem. The historical and romantic setting opposite St Martin's Church is the backdrop for regular exhibitions and special projects as well as artistic creations.

The small but exclusive studio is definitely worth a visit.

Stiftstraße 2, 71063 Sindelfingen
Phone: +49 (0) 7031 870682

Please book your tour in advance by phone.

■ House of the Danube Swabians

The “House of the Danube Swabians” was established in 1970 on the Goldberg after the city of Sindelfingen took over the sponsorship of the Danube Swabians from what was formerly Yugoslavia in 1964.

Discover a wide-ranging collection of Danube-Swabian cultural artefacts. An extensive collection of Danube Swabian literature is accessible in a specialist modern library, and approximately 200 pictures document the ethnic group’s artistic works. The historical exhibition room will tell you all about their old homeland and explore the topic of “flight and displacement”. The Danube Swabian parlour, furnished with original furniture, gives you a chance to experience the past up close. Special exhibitions and musical events are also held regularly in the foyer.

Goldmühlestraße 30, 71065 Sindelfingen
Phone: +49 (0) 7031 7937633
Email: mojem@haus-donauschwaben.de
www.haus-donauschwaben.de

Opening times:
Tue-Fri: 09:00–12:00 and 13:00–16:00



Exterior view of City Gallery Sindelfingen

■ City Gallery Sindelfingen

The City Gallery Sindelfingen was founded in 1990 as a place for modern and contemporary art. Located in the city centre in a neo-classical building, it was rebuilt as a museum by the Berlin architect Josef Paul Kleihues and extended with the Octagon. With the Lütze Collection, the gallery boasts significant works of modern and contemporary art.

The museum considers itself an exhibition and production venue with a focus on more recent works. Site-specific works and exhibitions are developed in close cooperation with the artists and then displayed in group or individual exhibitions. Contemporary discourse is presented alongside well-established works and is supplemented by new productions. The large exhibitions are complemented by the SCHAUFENSTER JUNGE KUNST (Young Art Showcase), which features young and experimental artists. KABINETT LÜTZE is a permanent home for the museum’s own collection.



Marktplatz 1, 71063 Sindelfingen
Phone: +49 (0) 7031 94325
www.galerie-sindelfingen.de

Opening times:
Mon-Fri: 10:00–18:00
Sat, Sun, public holidays: 10:00–17:00

Interior view of the Octagon:
Carolina Pérez Pallares, “We are spies who work for everyone”
2017

■ City Museum – History comes alive

The City Museum is located in the heart of the historic city centre in the Old City Hall and the adjacent Salzhaus, which were built in 1470 and 1592 respectively. The exhibition presents highlights of the city's history from its foundation to the present day. The wood-panelled farmhouse parlour from the 19th century and the detailed city model showing Sindelfingen in 1830 are particularly noteworthy. Archaeological finds and relics from the once rural small town add to the tour and bring the past to life.

Lange Straße 13 / Hintere Gasse 2, 71063 Sindelfingen

Phone: +49 (0) 7031 94357

Email: museen@sindelfingen.de

Opening times:

Tue - Sat: 15:00–18:00

Sun, public holidays: 13:00–18:00

Museum entry is free of charge.



Exterior view of Stadtmuseum



Exterior view of Weaving Museum

■ Weaving Museum – capital of the weaving industry

Sindelfingen has a long weaving tradition. Immerse yourself in the world of weaving. The Weaving Museum in the former Sindelfingen Weaving School gives you a detailed insight into the significance of Sindelfingen as a weaving town in Württemberg, especially in the 19th century.



Jacquard loom in the Weaving Museum

The museum depicts the development from hand weaving to machine production and its impact on the city. One highlight is the Jacquard loom, featuring a punch card mechanism that was a key milestone in the development of computer technology. Guided tours can be organised for groups.

Corbeil-Essonnes-Platz 4, 71063 Sindelfingen

Phone: +49 (0) 7031 94357

Email: museen@sindelfingen.de

Opening times:

Fri-Sun, public holidays: 15:00–18:00

Museum entry is free of charge.

■ 100-year anniversary of the “Schnödeneck” garden city development

When the Daimler factory moved to Sindelfingen in 1915, there was a shortage of available housing. The renowned architect and professor of the Stuttgart School Paul Schmitthenner designed the Schnödeneck garden city estate in collaboration with the Non-profit Building and Savings Association.

The settlement, which was built on the eastern outskirts of the city, is now situated in the middle of the city.

Features of the settlement include the self-sufficient allotments with sheds and stables and the “Mistweg” (dung path) footpath system.

This protected architectural site is characterised by typical details such as hipped and half-hipped roofs with rectangular roofed houses, bat, oval and round-arched dormers and the profiling and muntin structure of windows and doors.



Schnödeneck estate

■ “Grenzsteinweg”

Sindelfingen has several historical boundary stones that are now officially considered small monuments. Since 2013, some of these stones can be discovered on a walk along the “Grenzsteinweg” (boundary stone path). Boards along the trail provide interesting information on topics such as why boundary stones were so important. The Grenzsteinweg is located in Hinteres Sommerhofental and can easily be combined with other forest hiking trails.

For more information, please contact the Schwarzwaldverein Sindelfingen e.V. at www.swv-sindelfingen.de



Stone number 100 on the Grenzsteinweg

■ “Poetic Places”

“Poetic Places” are a unique artistic feature in Sindelfingen: five works of art in the city centre reference cultural-historical aspects from times gone by.

These poetic places include, for example, the long-forgotten cemetery of the poor, a work of art in the former cloister at St Martin's Church and the artistic design in a former farmer's garden.

■ Artworks in public spaces

Public art is an integral and essential part of Sindelfingen's urban culture. Allow yourself to be inspired by more than 100 sculptures, statues and installations, some of which were created by world-renowned artists such as Mary Vieira, Ulrich Rückriem, Lawrence Weiner and Horst Antes.

The artworks can be found throughout the city and its districts. The majority of the artworks in the centre come from the 1982 exhibition "German Sculptors of the 20th Century".



"Head" by Horst Antes



"Harlequin" by Martin Matschinsky and Brigitte Denninghoff



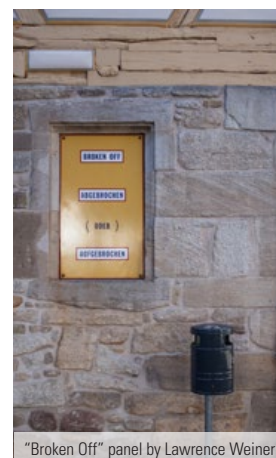
"Granite, split, cut" by Ulrich Rückriem



"Schwätzweiber fountain" designed by Josef Zeitler and made by Robert Friedrich Schäfer



"Fountain Scene" sculpture by Martin Kirstein



"Broken Off" panel by Lawrence Weiner

City tours

Join one of the many exciting city tours through Sindelfingen.

Trained city guides will be delighted to take you on an entertaining and informative journey.

More information and booking:
Tourist Information Sindelfingen
Marktplatz 1, 71063 Sindelfingen
Phone +49 (0) 7031 94325
Email: i-punkt@sindelfingen.de
www.sindelfingen.de

Opening times:
Mon-Fri: 10:00–18:00
Sat - Sun: 10:00–17:00

■ Historical City Tour

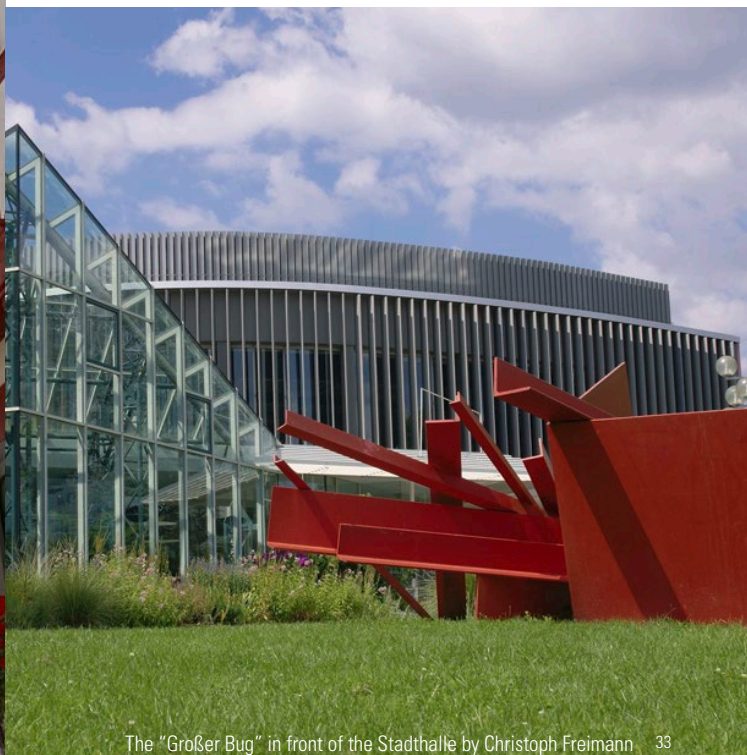
It has been a long journey from the Roman settlement to the modern industrial city that was officially founded in 1263. During this historical city walk, you can still discover many signs of the past.

■ Witch Hunt in Sindelfingen

Sindelfingen was no exception when it came to witch hunting: at least 21 women were burned for being witches between 1563 and 1616. This themed tour will explore this dark chapter in the city's history.

■ Art walk

Have you heard of the Sindelfingen Harlequin? More than 100 works of art can be discovered throughout Sindelfingen. The art walk will teach you about sculptures, statues and their artists, while opening your eyes to the creative side of Sindelfingen.



The "Großer Bug" in front of the Stadthalle by Christoph Freimann 33



Half-timbered houses in Kurze Gasse 32

■ In the footsteps of Sindelfingen women

Learn about women such as Mechthild of the Palatinate, the mother of Count Eberhard im Barte and Minna Moscherosch-Schmidt, who founded the city's first hospital.

■ Sindelfingen for kids

Musicians at Friendship Fountain, mysterious writing on St Martin's Church, strange signs on old houses. Discovering Sindelfingen through children's eyes is a special experience for everyone.

■ St Martin's Church for kids

What does the lion on the door of St Martin's Church mean? How did artists paint an angel and animals on the church ceiling? Children explore and find the answers to these and other secrets together.

■ Tour of St Martin's Church

On a guided tour of the Romanesque St Martin's Church, which was consecrated in 1083, you will learn interesting facts about this historical monument from its founding to the present day.

■ Guided tour of the scriptorium

The historic canons' house opposite St Martin's Church holds a special treasure in the form of its scriptorium, which was established in 2013. A guided tour through the uniquely painted room offers exciting insights into the Middle Ages and the former Augustinian monastery.



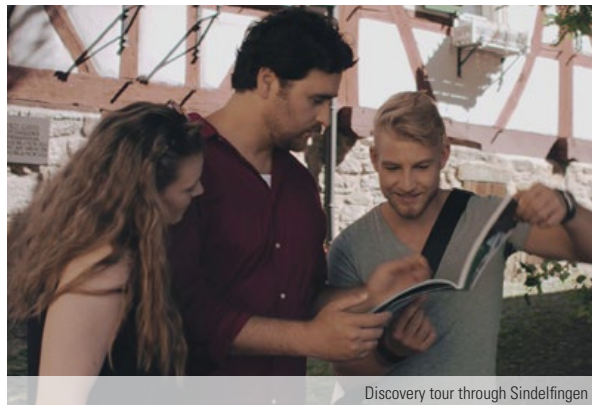
Scriptorium in the Canons' House

■ Sindelfingen at night

By torchlight, the city seems more unspoiled than it does during the day. The historic city centre has a unique way of making you feel like you've stepped back in time.

■ Half-timbered tour through the historic city centre

Sindelfingen is home to several half-timbered houses. From the oldest house dating back to 1363 to the "high-rise," these medieval half-timbered houses offer a fascinating glimpse into times gone by.



Discovery tour through Sindelfingen



Historic city tour through Sindelfingen



Half-timbered house in Sindelfingen

Actively explore Sindelfingen

Young or old, indoors or outdoors: Sindelfingen offers plenty of opportunities to be active. Why not take a hike through Sindelfingen's city forest, for example, or visit the largest sports and family swimming pool in the Stuttgart region? Tech-savvy treasure hunters will enjoy our geo-caching tour as well as the stone and fountain navigation.



Sindelfingen swimming pool centre



Maichingen indoor swimming pool

■ Sindelfingen swimming pool centre

The swimming pool centre (Badezentrum Sindelfingen) has an indoor pool, sauna and outdoor pool for pool fun for young and old at any time of the year. Water lovers can enjoy the only covered 50-metre sports pool in the Stuttgart region.

Hohenzollernstraße 23, 71067 Sindelfingen

Phone: +49 (0) 7031 860216

www.badezentrum.de

Opening times:

Find current opening times at

www.badezentrum.de

■ Maichingen indoor swimming pool

The indoor swimming pool (Gartenhallenbad Maichingen) is a small but beautiful pool in Sindelfingen. In nice weather, you can relax or play in the garden.

Berliner Straße 32, 71069 Sindelfingen

Phone: +49 (0) 7031 383051

www.gartenhallenbad-maichingen.de

Opening times:

Mon, Thu, Fri: 13:00–18:00

Tue, Wed: 13:00–21:00

Sat: 08:00–16:00

Sun, public holidays: 08:00–13:00



Kneipp facility in Sommerhofen Park

■ Sommerhofen Park Kneipp facility

The Kneipp facilities at the northern end of the Sommerhofen Park refresh tired legs with spring water from March to October.

■ Skate park and pump track

The skate park behind the Glaspalast has been a popular meeting place for teenagers and young adults for many years. In 2019, it was extended to include a pump track, making it a real highlight for all skaters, scooters, BMXers and inline skaters – but please don't forget your helmet.



Pump track in Sindelfingen



© Fotoknobel

Wirtschaftsförderung Sindelfingen GmbH

Sindelfingen offers the optimum conditions in the middle of one of the strongest economic metropolitan regions in Europe. Great entrepreneurs work here. We at Wirtschaftsförderung Sindelfingen GmbH (WSG) work passionately every day to keep it that way: today and in the future. We want to work with you to make Sindelfingen even stronger. We are committed every day to making Sindelfingen the ideal location for you as entrepreneurs and investors.

Our service for you

For companies and investors

- » Contact for local companies and companies interested in locating here
- » Real estate service
- » City centre development
- » Cooperation offers
- » Networking events
- » Newsletter

For founders

- » Information
- » Contact point for start-ups
- » Personal consultation
- » Start-up Planet funding programme Sindelfingen
- » Information and network events

For visitor / location marketing

- » Information about attractions
- » Events, trade fairs and promotions
- » Merchandising items and souvenirs with a city connection
- » Press work and PR
- » Publications

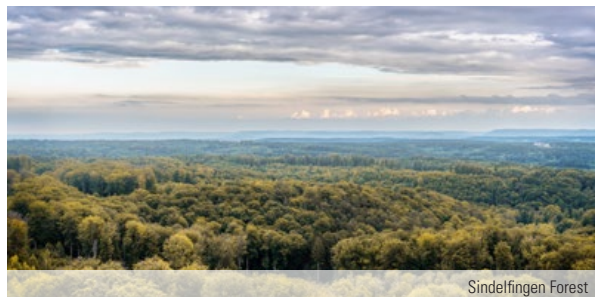
Named a „start-up-friendly municipality“ in a state competition Start-up BW Local!

Curious?

Visit us at www.sindelfingen.org

Wirtschaftsförderung Sindelfingen GmbH
Planienstraße 2
71063 Sindelfingen
Phone: +49 (0) 7031 68842-0
Email: info@sindelfingen.org

 Wirtschaftsförderung
Sindelfingen GmbH



Sindelfingen Forest



Forest walk

■ Walking

Enjoy a network of circular walking trails in the Sindelfingen city forest covering a total of almost 60 kilometres. The eight signposted hiking trails are between 4.8 and 18 kilometres long and are maintained by the Black Forest Association Sindelfingen. Flyers with information about the individual walking trails, such as the Squirrel Trail or the Rabbit Trail, can be found at the Tourist Information or downloaded free of charge at www.swv-sindelfingen.de.



Geo-caching tour through the old town

■ Geo-Caching Tour

Experience and discover Sindelfingen's varied historical features on an exciting geo-caching tour. All you need is a GPS-enabled smartphone, the right app and a trail guide flyer. You can find this at the Tourist Information.

Find more information at:

www.sindelfingen.de/start/Freizeit+Tourismus/geocaching.html

■ Stone and fountain navigation

Are you ready for a unique digital scavenger hunt? Take your GPS-enabled smartphone and embark on an information-packed journey to probably the most important resource there is: clean drinking water with the Sindelfingen Fountain Navigation. With the Sindelfingen Stone Navigation, you can explore the fascinating world of rocks while walking through the historic old town.

The mobile app is available in the Google Play Store and Apple App Store.

Find more information at:

www.sindelfingen.de/start/Klima+Umwelt/BrunnenNavi.html

www.sindelfingen.de/start/Klima+Umwelt/SteinNavi.html



Sindelfingen historic city centre

Relax in nature

Sindelfingen has a green lung. Relax in one of the many parks and green spaces and enjoy nature. There are many places to unwind, be it in Sindelfingen's city centre or in the suburbs of Maichingen and Darmsheim, on a park bench or on a stroll.



Sindelfingen Sommerhofen Park



Villa Lanz at Klostersee



Pavilion in Sommerhofen Park

■ Klostersee

Klostersee, a mere three-minute walk from the city centre, is an idyllic location. Take a circular walk through the adjacent Sommerhofen Park to discover the full beauty of the grounds. Look out for the impressive Villa Lanz with its quirky turret, built by Sindelfingen architect Georg Bürkle in 1910 in the classic Art Nouveau style.

■ Sommerhofen Park

Sommerhofen Park is the city's green calling card: it features alternating ornamental and landscaped lawns, well-kept perennial beds, native wild plants and wetlands. Find your perfect local relaxation spot.

■ Aichbachgrund

Over the years, this former part of an old quarry in the Darmsheim district of Sindelfingen has been transformed into an enchanting park. Enjoy a stroll along winding paths over gently rolling hills.



Going out, events and entertainment

Sindelfingen offers a wide and remarkable range of cultural activities. Once a year, annually or every two years: concerts, theatre performances and a wide variety of events offer first-class entertainment all year round and attract guests from near and far.

■ Maichingen community centre

Sindelfinger Str. 44
71069 Sindelfingen
www.buergerhaus-maichingen.de



■ Congress Center (CCBS)

Schillerstraße 23
71065 Sindelfingen
www.cc-bs.com

■ Messe Sindelfingen

Mahdentalstraße 116
71065 Sindelfingen
www.messe-sindelfingen.de



■ Glaspalast

Rudolf-Harbig-Straße 10
71063 Sindelfingen
www.glaspalast.com

■ Theaterkeller

Vaihinger Straße 14
71063 Sindelfingen
www.sindelfingen.de



■ Pavilion / IG Culture

Calwer Straße 36
71063 Sindelfingen
www.igkultur.de

Further event locations can be found in the Location Guide Sindelfingen.

This is available at the Tourist Information in Sindelfingen or can be downloaded free of charge from www.sindelfingen.org.

March

HEALTH AND SPORT WEEKS
City-wide

May

COMPANY CITY RUN
City centre
CRAFT MARKET
City centre

June

INTERNATIONAL STREET FESTIVAL
City centre
DARMSHEIM POTTERY MARKET
Darmsheim

July

CULTURAL FESTIVAL BIENNALE
City centre
WATER MUSIC
Klostersee

August

SIFI ROCKS
Every Wednesday
GOURMET MARKET
Marktplatz

September

FIREWORKS NIGHT
City centre
WINE MARKET
Marktplatz
MAICHINGEN HORSE DAY
Maichingen

November

LONG NIGHT OF THE MUSEUMS
City-wide
DARMSHEIM ADVENT MARKET
Darmsheim

December

SINDELFINGEN CHRISTMAS MARKET
Marktplatz
MAICHINGEN CHRISTMAS MARKET
Maichingen

Please note that there may be changes because of the coronavirus pandemic. You can find a current and detailed overview as well as other events in the events calendar at www.sindelfingen.de.



Opening of Public Viewing at Weifbachplatz



Festival weekend - 750 years of Sindelfingen



Moscow Circus on ice

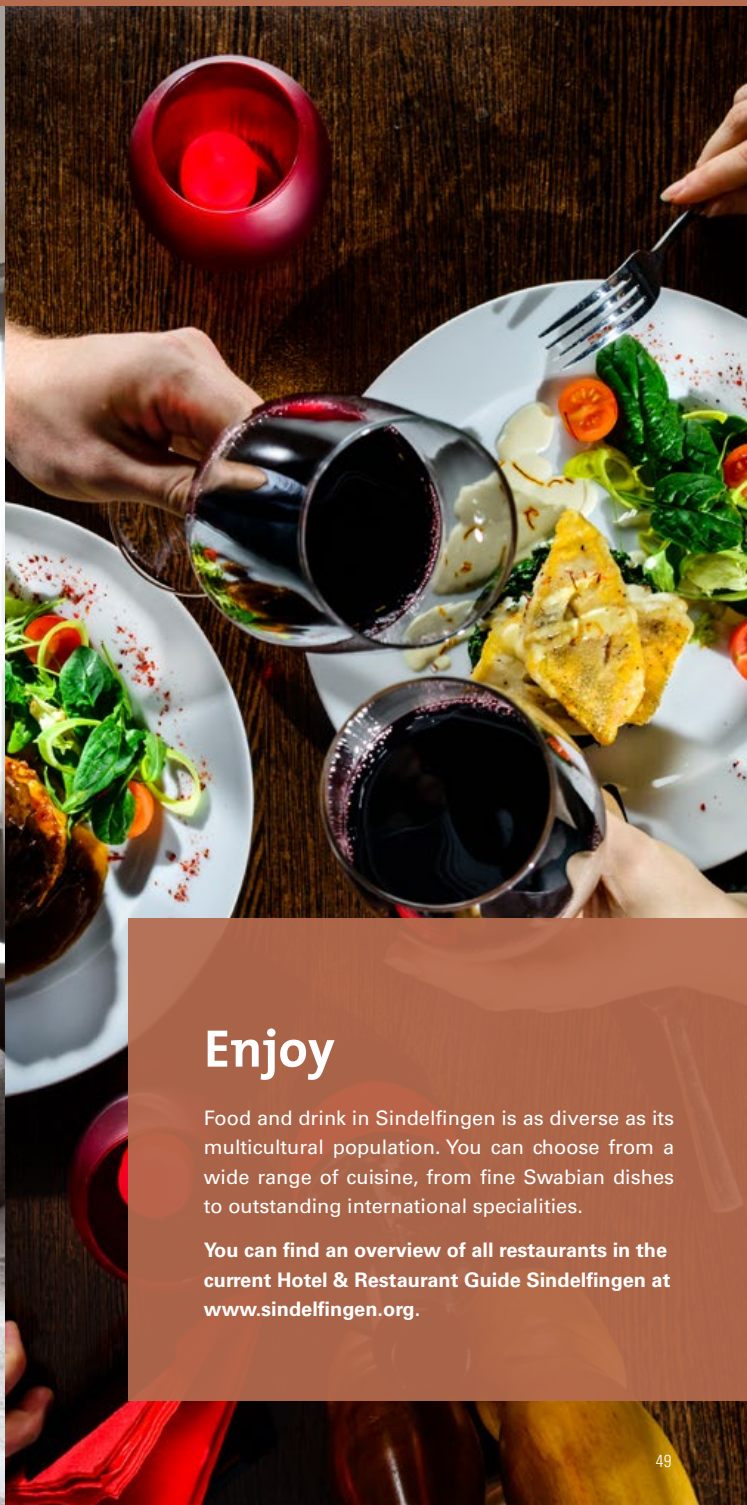


Silbermond Concert at the Glaspalast

Stay

After a long and tiring day of business or on a short holiday – you are in good hands at Sindelfingen's hotels.

You can find an overview of all the hotels in the current Sindelfingen Hotel & Restaurant Guide Sindelfingen at www.sindelfingen.org.



Enjoy

Food and drink in Sindelfingen is as diverse as its multicultural population. You can choose from a wide range of cuisine, from fine Swabian dishes to outstanding international specialities.

You can find an overview of all restaurants in the current Hotel & Restaurant Guide Sindelfingen at www.sindelfingen.org.

Shopping

Individuality and service are key features of shopping in Sindelfingen. Whether you're planning an extensive shopping trip or just want to pick up a little something – the charming mix of small boutiques, independent specialist shops, chain stores and shopping centres leaves nothing to be desired.



■ City centre

Sindelfingen's city centre has it all: a wide range of specialist businesses offer everything your heart desires. Friendliness and competence are key values here.

■ Weekly market

The popular weekly market offers regional fresh specialities and invites you to take a gastronomic stroll around the market square – surrounded by a beautiful backdrop.

Weekly market during summer months:

Tue, Thu, Sat: 07:00–13:30

Weekly market during winter months:

Tue, Thu, Sat: 08:00–13:00

■ Stern Center

Located in the city centre, the Stern Center offers you a complete shopping experience. Treat yourself to culinary delights in the restaurants during your breaks.

Mercedesstraße 12, 71063 Sindelfingen

www.sterncentersindelfingen.de

Opening times:

Mon-Sat: 09:30–20:00

■ Breuningerland Sindelfingen

Breuningerland Sindelfingen leaves nothing to be desired. The spacious setting is home to more than 120 shops. The centre is located right next to the A81 motorway and has more than 3,000 free parking spaces.

Tilsiter Straße 15, 71065 Sindelfingen

www.breuningerland-sindelfingen.de

Opening times:

Mon-Sat: 10:00–20:00



Useful information

We have compiled a few tips on travel, parking and tourist information to make your stay in Sindelfingen as comfortable as possible.

■ Regional connections

Sindelfingen is very easy to reach by all means of transport: Stuttgart-Echterdingen International Airport and the Stuttgart Messe convention centre are only 15 minutes away by car. Sindelfingen is also directly connected to the A81 motorway at three junctions. There are also three suburban railway stops, making it easy for you to get here by public transport.

■ Parking

Our parking signage system makes it easy for you to find your way around. There are around 4,000 parking spaces in the city centre for easy access to the shops, the pedestrian zone and the Rathaus. Motorhome parking spaces are available at the Erwin Hymer Center.

■ Public toilets

Public toilets can be found at the market square, the city hall and in the city library (if open). In addition, as part of the "Nice Toilets" project, restaurateurs, department stores and other sponsors make their toilets available to the public. Participating businesses can be identified by a logo at the entrance.

■ Wi-Fi

Visitors receive free Wi-Fi access at the market square and "Wettbachplatz".

■ "Fairy Godmother" initiative

Don't worry if your children are out alone for a short time. Under the "Fairy Godmother" initiative, helpful Sindelfingen citizens and entrepreneurs are always on hand to offer children help and advice. Participating shops, companies and institutions can be identified with a sticker.

■ Tourist Information

Marktplatz 1, 71063 Sindelfingen
Phone: +49 (0) 7031 94325
Email: i-punkt@sindelfingen.de
www.sindelfingen.de

Opening times:
Mon-Fri: 10:00–18:00
Sat, Sun: 10:00–17:00





Discover places of interest

1	St Martin's Church	13
2	Sindelfingen historic city centre	15
3	Sensapolis	16
4	Mercedes-Benz Customer Centre Sindelfingen	18
5	Motorworld Region Stuttgart	20

Experience art and culture

6	SCHAUWERK	23
7	Atelierhaus Studio Sindelfingen	23
8	House of the Danube Swabians	24
9	City gallery	25
10	City museum	26
11	Weaving Museum	27
12	"Schnödeneck" garden city development	28

Actively explore Sindelfingen

13	Sindelfingen swimming pool centre	37
14	Maichingen indoor swimming pool	37
15	Sommerhofen Park Kneipp facility	38
16	Skate park and pump track	38
17	Sindelfingen municipal forest	40

Relax in nature

18	Klostersee	43
19	Sommerhofen Park	43
20	Aibachgrund	43

Event venues

21	Maichingen community centre	45
22	Congress Center Böblingen Sindelfingen (CCBS)	45
23	Messe Sindelfingen	45
24	Glaspalast	45
25	Theaterkeller	45
26	Pavilion / IG Culture	45

Shopping

27	Weekly market	51
28	Stern Center	51
29	Breuningerland	51



Tourist
Information



Suburban railway station

ZOB Central bus station



Car park



Free Wi-Fi



Public toilets



Historic city centre



Post office



Playgrounds

Scale ~1:7,000

100 m

400 m

Bildnachweise:

Achim Mende (S. 37), Art Trends (S. 47), Breuningerland (S. 50), Bürgerhaus Maichingen (S. 45), Charlie Stive Dagne (S. 44), Fotoknobi (S. 1, 4, 6-7, 15, 25, 28, 31, 36, 38, 47), Frank Kleinbach (S. 22), Glaspalast Sindelfingen (S. 45), Henning Krause (S. 24-25), Klaus Philippscheck (S. 29, 43), Martina Denker (S. 8-9, 40), Mercedes-Benz Kundencenter Sindelfingen (S. 18-19), Messe Sindelfingen (S. 45), MOTORWORLD Region Stuttgart (S. 20-21), Sensapolis (S. 16-17), Shutterstock (S. 40, 48, 49), Sindelfingen-views (S. 4, 14, 15, 43), Stadthalle Sindelfingen/ CCBS (S. 33, 45), Theaterkeller Sindelfingen (S. 45), Tina Alferi (S. 45), Werberlinge (S. 4, 42, 52)

Anmerkungen:

Die Einträge wurden im Einklang mit der DSGVO erstellt und mit größtmöglicher Sorgfalt geprüft. Dennoch erhebt diese Publikation nicht den Anspruch auf Vollständigkeit. Für die Inhalte der Einträge sind die entsprechenden Betriebe verantwortlich. Alle Angaben erfolgen ohne Gewähr.

Über eine Rückmeldung zur Broschüre sowie Verbesserungsmöglichkeiten freuen wir uns: info@sindelfingen.org.





Impressum



Wirtschaftsförderung
Sindelfingen GmbH

Herausgeber:

Wirtschaftsförderung Sindelfingen GmbH
Geschäftsführer: Sascha Dorday
Verantwortlich: Luzie Halbach
Planiestr. 2, 71063 Sindelfingen
5. Auflage

Druck:

06/2021, VisitYou Leinfelden-Echterdingen

Grafik:

green bee design

www.sindelfingen.org

